

**McGuire Auction Co., Inc.**  
**PROPERTIES**  
[www.mcguireauktion.com](http://www.mcguireauktion.com)



**235 S. Main St., Galva, IA**

Pretty story and a half with nice open front porch facing main street that sits on a large level lot with a detached garage off the side street. This home features a lovely front entry with colonades, a large living room, good sized dining room with builtin buffet, downstairs bedroom with double closets, kitchen, main floor laundry, and half bath all on the main floor. Second floor has 3 bedrooms - all with closets & hardwood floors, and a large remodeled full bath.

**“We’ve Sold the Earth and Everything On It - Since 1888”**

235 S. Main St., Galva

\$49,500

Property Profile  
Main Floor

Living:  
Foyer w/colonades  
Dining room w/french doors  
Kitchen:  
Main Floor Bedroom #1 w/double closets  
Half Main Floor Bath  
Main Floor Laundry  
Small screen porch  
Second Floor  
Full Bath  
Bedroom #2 w/closet  
Bedroom #3  
Bedroom #4

Basement  
storage only - no finish  
Other Information

Square Feet: 1734\*  
Lot Size: 105' x 150\*\*  
School: Galva-Holstein Comm.\*  
Exterior: siding\*  
Roof: asphalt\*  
Basement: full\*  
Year Built: 1918\*  
Garage: 360 square feet detached  
Taxes: '09/10 due in '10/'11 - \$498  
Utilities: \$132/month budget  
From MidAmerican - 24 month average  
house has not been occupied for some  
time

\*Information from Co. Assessor

For a showing contact:  
McGuire Auction Co., Inc.  
712-368-2635  
712-368-2784 (fax)  
mcgauco@ruralwaves.us  
www.mcguireauction.com



Jim McGuire  
712-229-9183

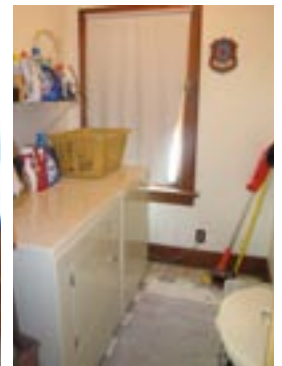
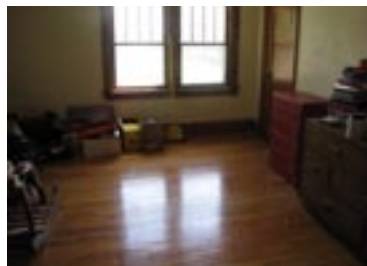


Martha Boyle  
712-229-9164

# McGuire Auction Co., Inc.

## PROPERTIES

www.mcguireauction.com



INFORMATION SUCH AS MEASUREMENTS, SQUARE FOOTAGE AND DESCRIPTIONS OF MATERIALS, FIXTURES, OR OTHER COMPONENTS OF THE IMPROVEMENTS MAY NOT BE ACCURATE AND SHOULD NOT BE RELIED UPON, BUT SHOULD BE INDEPENDENTLY VERIFIED BY BUYER PRIOR TO PURCHASE.

**"We've Sold the Earth and Everything On It - Since 1888"**